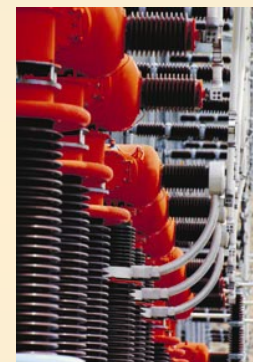
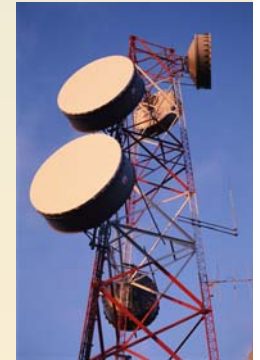
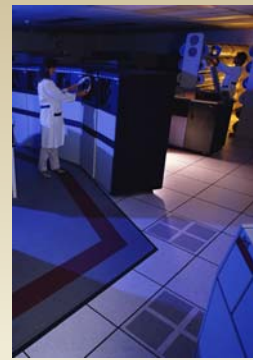
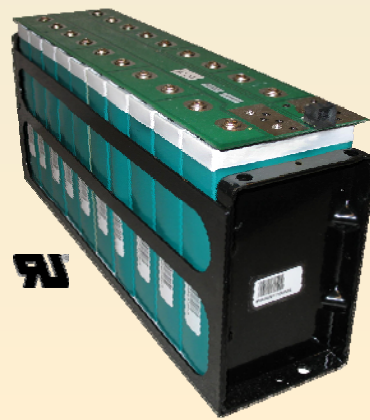


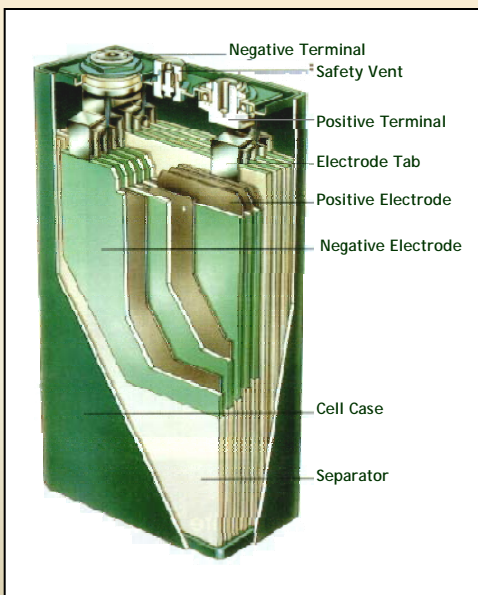
Series 9500 - NiMH Standby Power Battery

Designed to meet the demanding needs of UPS, Telecommunications and Distributed Generation applications:

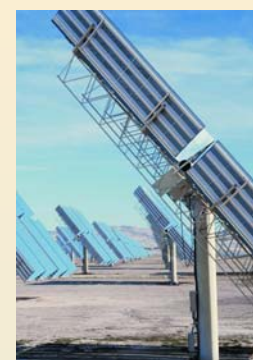
- High power
- High energy
- Long cycle life
- Environmentally safe
- Maintenance free
- UL recognized
- Operates over wide temperature range
- Excellent for cyclic and float applications



Technical/Engineering Specifications



▪ Voltage (V)	12
▪ Capacity Ah (C/3 to 10 V @ 25°C)	86
▪ Volume (L)	7.2
▪ Nominal Energy (C/3, Wh)	1040
▪ Specific Energy (Wh/kg)	57
▪ Energy Density (Wh/L)	144
▪ Case Material	Epoxy-Coated Steel
▪ Construction	Air Cooled
▪ Float Voltage	14.3 V @ 25°C
▪ Temperature Compensation	-25 mV/°C
▪ Max Charge Current	C rate to 70% SOC
▪ Internal Resistance	6 mΩ
▪ Mass (kg)	18.2
▪ Terminals	M5
▪ Torque @ the terminal	55 ±5 in lbs.



Series 9500 - NiMH Standby Power Battery

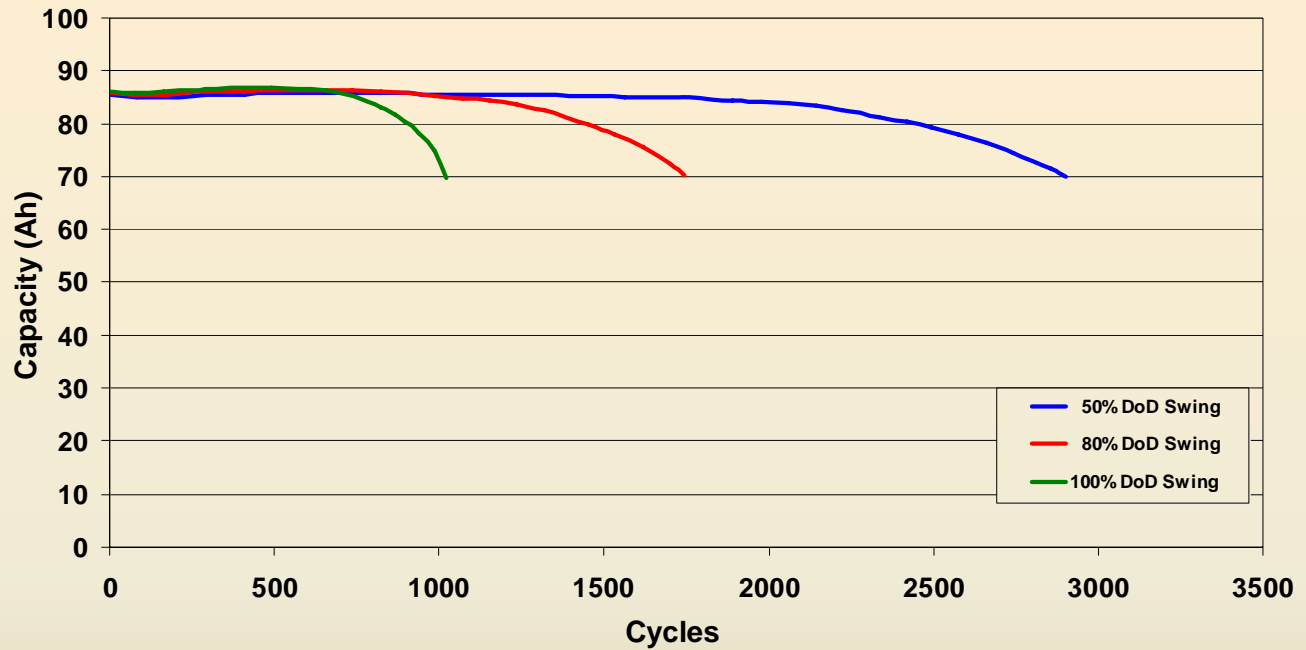
Dimensions



Cycle Life

Capacity vs. Cycle Life

@ 25° C Ambient Temp., C/3 to 80% DOD



COBASYS

3740 Lapeer Road South Orion, MI 48359

(P) 248.620.5700 (F) 248.620.5702

sales@cobasys.com

www.cobasys.com

3.16.07 Imp